

# K O I S D E P R O G R A M M E R

The Kois Deprogrammer is a removable retainer-like appliance which allows your dentist to evaluate the stability of your bite. Every time you chew or swallow you must adapt your jaw to the best fit for your teeth. If this fit is not ideal for your jaw joint and muscles, you will be at higher risk for experiencing facial pain as well as worn, broken or loose teeth. The Kois Deprogrammer removes the influence of your teeth from your chewing system by preventing them from interlocking and reinforcing the position of your existing bite. This allows your lower jaw to relax into a more comfortable position. Once your lower jaw has fully relaxed, your dentist will be able to provide you with treatment options for maintaining your bite in this new, more comfortable position.

## Frequently Asked Questions

### 1. *How long do I need to wear my Kois Deprogrammer?*

You can expect your dentist to recommend wearing the Kois Deprogrammer for up to one month. During this time it should only be taken out of your mouth while you are eating meals and cleaning your teeth.

### 2. *How does my Kois Deprogrammer feel in my mouth?*

The Kois Deprogrammer is designed to be as comfortable as possible. Within a few days you will likely have adapted to talking with it in your mouth. Some people initially experience soreness in their chewing muscles which resolves as those muscles relax.

### 3. *How much will my bite change?*

The change in your bite is usually very slight, although the improvement in the feel of your bite after wearing the Kois Deprogrammer can be dramatic.

### 4. *If I decide not to proceed with treatment after wearing the Kois Deprogrammer, will my bite remain changed?*

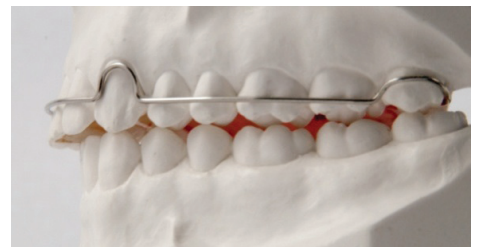
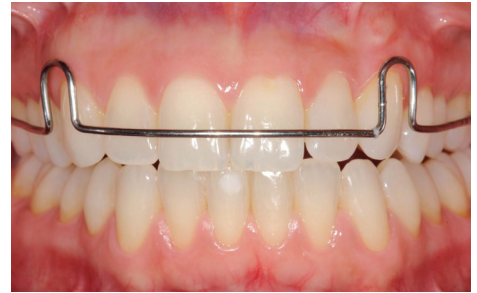
No, your chewing system will adapt back to your original bite after a few hours of leaving the Kois Deprogrammer out of your mouth.

### 5. *How do I care for my Kois Deprogrammer?*

Clean your Kois Deprogrammer every time you clean your teeth. Gently brush your appliance with a small amount of toothpaste on your toothbrush and rinse with warm water. Any time the Kois Deprogrammer is out of your mouth, keep it safe in its retainer box.

***You must wear your Kois Deprogrammer to your dental appointments.***

***If you have any further questions or concerns, please contact your Dentist.***



Kois Deprogrammer